



JPA's PGIP News

This newsletter updates JPA Practices on the BCBSM PGIP program

PGIP ENVIRONMENTAL CANCER PROGRAM

Attention PGIP participating PCP physicians, your time is running out to take advantage of earning \$500 and CME credits!

Through July of this year, you can complete the Agency for Toxic Substances and Disease Registry's (ATSDR) four Environmental Case Studies and earn these two rewards by visiting www.karmanos.org, then clicking on the Education tab (far right) and scrolling to Environmental Cancer Program. BCBSM will issue a check for \$500 for you to your PO, the Jackson Physicians Alliance, during

the next PGIP payment in July 2011.

Within three weeks of completing the case studies, the Karmanos Cancer Institute will mail you a certificate attesting to your competency and they will include a "reproducible coupon for a discounted radon test kit, and a 'reminder' sheet with three questions regarding the three exposures that they hope you'll ask each patient."

If you are interested in learning more about the PGIP Environmental Cancer Program, view the pre-recorded webinar presentation made by Dr. Harbut for JPA in October 2010, which can be found at <http://www.karmanos.org/app.asp?id=1265>, then click on "webinar presentation," which is highlighted in the first full paragraph.



2011: Five New PGIP PCMH Initiatives

JPA will be working on the following new PGIP PCMH Service-Focused Initiatives with you and your practice in 2011. These are in addition to those PGIP initiatives already underway.

Extended Access – PCMH

Capability 5.0: The practice will ensure that all patients have comprehensive and timely access to health care services that are patient-centered. These include advance access scheduling, and access to a clinical decision maker 24 hours a day.

Test Tracking and Follow up – PCMH

Capability 6.0: The practice will systematically track tests ordered and test results, and systematically follow up with patients. The practice will work to improve effectiveness of care, patient safety and efficiency by using timely information on all tests and results.

Self Management Support – PCMH

Capability 11.0: The practice will work to improve the patient's ability to self-manage health by providing educational resources and ongoing assistance and encouragement. The practice will collaborate with the patients and families to pursue their goals for optimal achievable health.

PGIP Program



Coordination of Care – PCMH

Capability 13.0: The practice will coordinate across health systems through a process of active collaboration and communication between providers, caregivers, and the patient.

Specialist Referral Process – PCMH

Capability 14.0: The practice will use a paper based or electronic system to systematically track practitioner referrals designated as critical until the specialist or consultant report returns to the practice.

What this means for your practice: By working on these initiatives you could possibly add up to 44 new capabilities towards your PCMH capability score. This would help move you one step closer to becoming PCMH nominated and designated.

What this means for your patients: Your patients will be provided the best possible quality and safe care, which is patient-focused and patient-centered. It will allow the patients flexibility to schedule appointments when they want to see the provider. Most importantly, it will engage the patient to be more proactive in their own health care.

JPA staff will be discussing these initiatives at our regular practice site visit meetings.

National Health Awareness

JPA has begun creating flyers announcing each nationally recognized Health Awareness Month. January is Cervical Cancer Awareness. February is American Heart Month and March is Colorectal Cancer Awareness.

The flyers are a great tool to use in your practice to educate patients through recommendation, education, reminders and scheduling assistance.

Watch for upcoming health awareness flyers in your e-mail at the beginning of each month.

Diabetic Care in JPA PGIP practices

The Integrated Health Management -Data & Technology committee has been working with JCMR to provide the NextGen practices with new reports related to evidenced-based care measures for diabetes. There are three reports available to your practice: Measures, Gaps and Metrics.

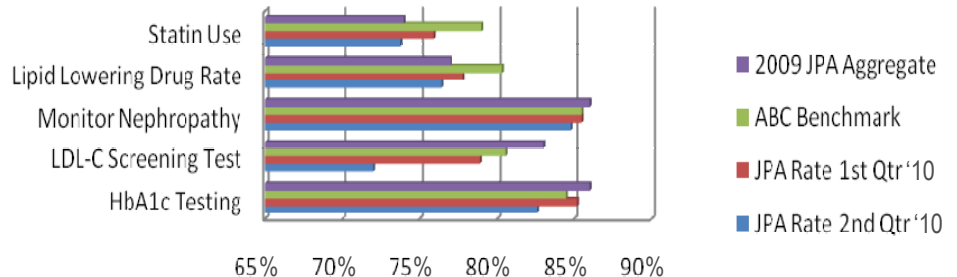
The Measures report includes all patient data for your patients with diabetes. The Gaps report includes where patient data is missing for evidenced-based measures. These reports can be filtered by location, financial class, provider, and patient. The Metrics report shows the percentages of missing or non-compliant data by your practice, comparing your practice against other practices on NextGen.

On February 11th, JCMR conducted a reporting workshop for all the practice managers and provided them with a report binder. The practice managers were asked to take the information back to their practices and start producing the diabetic reports on a regular basis. The



PGIP Evidence Based Care Report for 2010

Diabetic Measures



data in the reports should be validated for accuracy. Any feedback to JCMR and the Data & Technology Committee will help refine future reports.

The practices should incorporate the reports into their practice workflow to identify gaps in care and to improve processes for evidenced-based care measures.

If you have any questions in running

the reports, please contact the JCMR help desk for assistance.

The goal of JPA in 2011 is to begin collecting diabetic measures data from the practices using the Cielo registry, as well as each NextGen practice. In collecting this data, we will develop a JPA, all payer, aggregate rate to measure diabetic performance data for the entire JPA community.

PGIP Self-Assessment Update Twelve JPA practices nominated for 2011 PCMH

The PGIP PCMH Self-Assessment was completed at the end of 2010. This assessment is for practices to be PCMH - designated for July 2011.

JPA nominated 12 practices for PCMH, including the five practices that were previously PCMH designated. There were three validation visits scheduled for JPA. Two of those validation visits have been completed with another validation visit to be completed in March. There will be some follow up with the nominated practices that did not receive a validation visit. At the next PGIP Quarterly meeting, JPA will receive information regarding the follow-up that will occur for those practices.

The next PGIP PCMH Self-Assessment will occur in summer of 2011. Bonnie and Erika appreciate all of the hard work that practices have done. JPA's practices completed an average of 44 capabilities this year, a significant increase from the 2009 assessment.

LEAN update

“Every quality improvement starts with a problem.”

Steven Spiers

Chasing the Rabbit, DBA, MS, MS Senior Lecturer
Massachusetts Institute of Technology Senior Fellow
Institute for Healthcare Improvement

JPA is starting a new cycle of LEAN practice re-engineering in March. Allegiance Health – Albion and Trimas Family Care will be participating in this next cycle. “Lunch & Learns” and scoping session are scheduled for March.

If you are interested in participating in a future LEAN cycle, please e-mail BonnieM@jpadocs.com.



QUESTIONS?

Contact the Jackson Physicians Alliance

1310 Greenwood Avenue, Jackson, MI 49203

517-817-2140 (phone); 517-817-2142 (fax); BonnieM@JPAdocs.com